

MMC, PC, CTE and Legislative Update

December 12, 2011

Macomb Intermediate School District

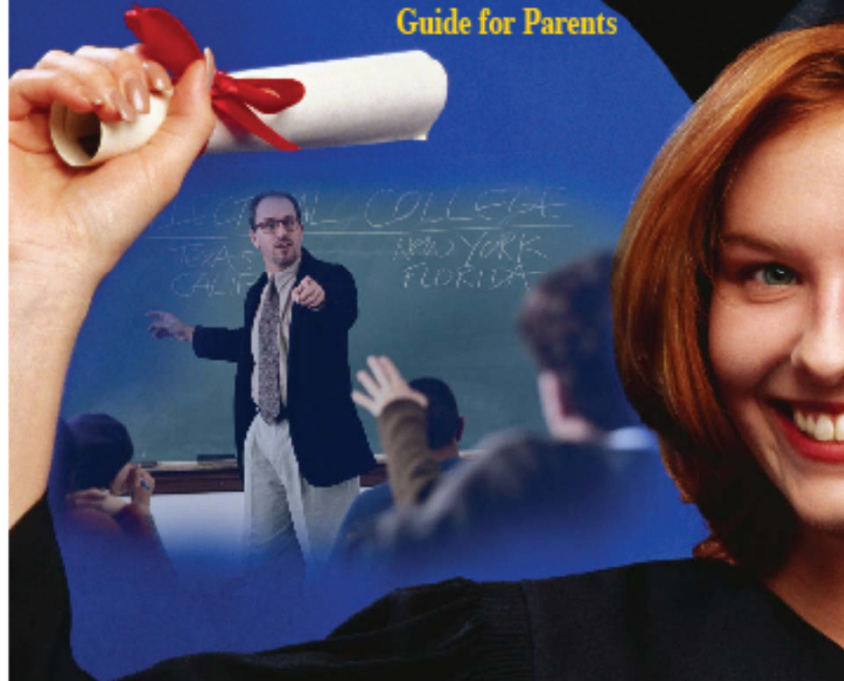


Presenters

- Susan Meyer, Special Projects Facilitator, MISD
- Tom Powers, Counselor/Post Secondary Liaison, MISD
- Jackie Moase-Burke, World Languages,
- Robert LeFevre, Director of Education Policy, Macomb Intermediate School District
- Thomas Koepke, Director of Special Education Management Services, Macomb Intermediate School District

Macomb Intermediate School District

Michigan's
High School
 **Graduation**
requirements
Guide for Parents



IMPORTANT NOTICE

Information is subject to change.

For the most current information, go to www.misd.net.

Under Quick Links, click on High School Graduation Requirements.

5th Edition

August 2010

Michigan Merit Curriculum

The graduation requirements are called the **Michigan Merit Curriculum**.

- Proposed to the State Board of Education in November 2005
- Adopted by the State Board of Education in December 2005
- Enacted as law by the State Legislature in March 2006
- Signed by the Governor in April 2006

Impact of State Law

The State of Michigan has now set the number of credits in each subject area, and, in many cases, specified the specific courses that must be taken in English, mathematics, science, social studies, health/physical education, the arts (visual, performing, and applied), and world languages. An online learning experience is also required.

Important Notes to Consider:

- Class of 2011 (8th graders in 2006-07) will need 16 credits
- Class of 2016 (3rd graders in 2006-07) will need a total of 18 credits – the 16 listed in the areas above plus 2 credits of World Languages

English Language Arts

4 credits

- Aligned to state content expectations developed by the Michigan Department of Education and approved by the State Board of Education

English Language Arts (continued)

- English 9, 10, 11 and 12 courses should include opportunities for students to meet the 91 expectations included in the 14 standards and four strands toward the grade-designated disposition.

English Language Arts Personal Curriculum (Modifications)

- ✓ No modification for general education students (two exceptions)
- ✓ Modification allowed for students with an Individualized Education Plan (IEP)
- ✓ Modification allowed for transfer students who have completed two years of high school out-of-state or at a non-public school

Mathematics

4 credits

- Algebra 1
- Geometry
- Algebra 2
- OR 3 credits – Integrated Sequence with same course content
- 1 additional math or math-related credit
- 1 credit must be in final year

Mathematics Personal Curriculum (Modifications)

- ✓ 1 credit of Algebra II may be modified to ½ credit of Algebra II, Statistics or Functions and Data Analysis
- ✓ Modification allowed after completion of 9th grade
- ✓ Modification allowed for students with an IEP
- ✓ Modification allowed for transfer students who have completed two years of high school out-of-state or at a non-public school

Mathematics Personal Curriculum (Modifications)

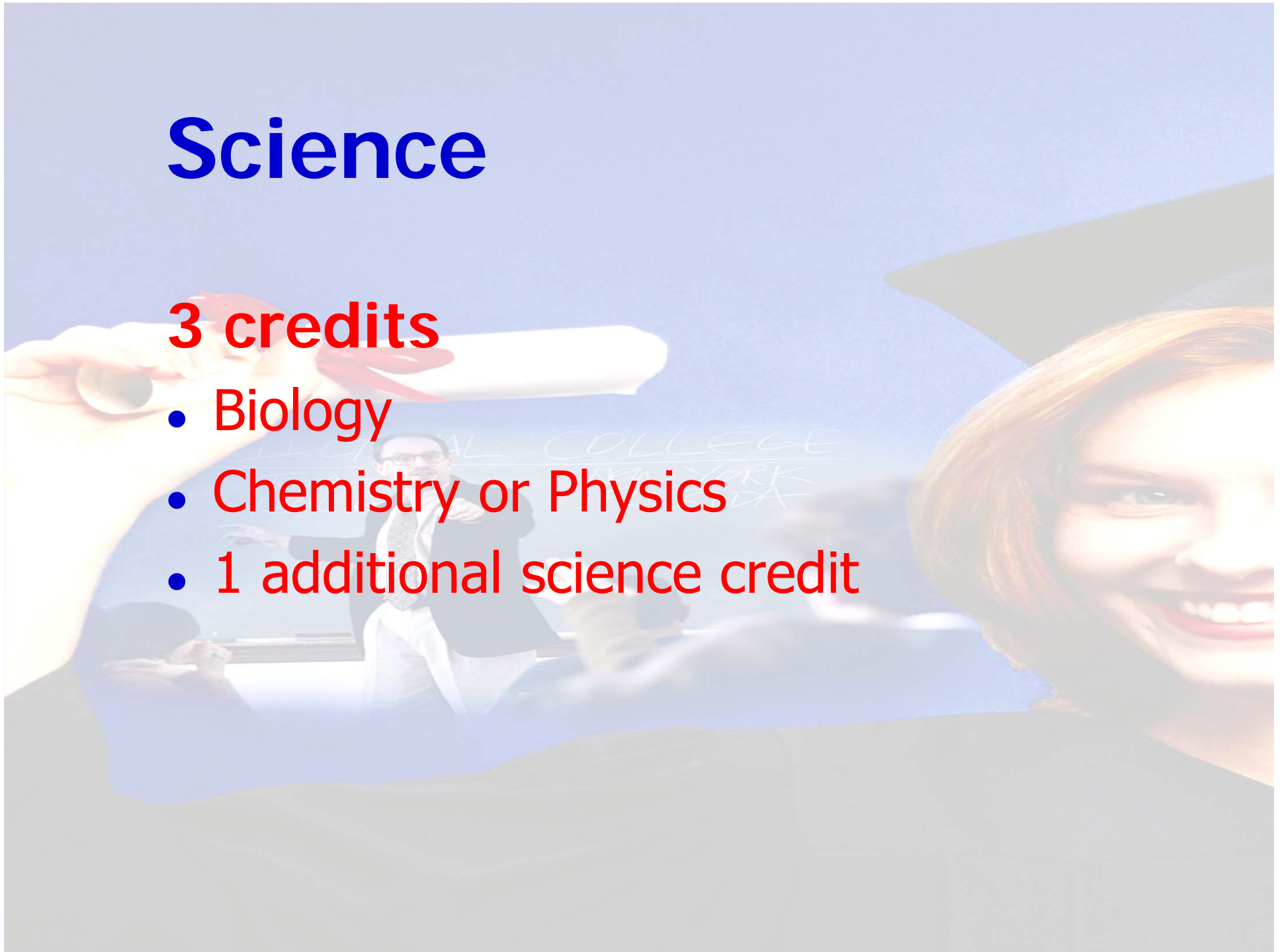
All Students:

- ✓ Complete at least 3.5 math or math-related credits
- ✓ Complete a math or math-related credit in the final year

Science

3 credits

- Biology
- Chemistry or Physics
- 1 additional science credit



Science Personal Curriculum (Modifications)

- ✓ No modification for general education students (two exceptions)
- ✓ Modification allowed for students with an IEP
- ✓ Modification allowed for transfer students who have completed two years of high school out-of-state or at a non-public school

Social Studies



3 credits

- U.S. History and Geography
- World History and Geography
- .5 Civics
- .5 Economics

Social Studies Personal Curriculum (Modifications)

- ✓ 2 credits must be earned before PC
- ✓ No modification of Civics
- ✓ Modified only if students take an additional credit beyond the required credits in English Language Arts, Mathematics, Science or World Languages
- ✓ Modification allowed for students with an IEP
- ✓ Modification allowed for transfer students who have completed two years of high school out-of-state or at a non-public school

Health and Physical Education

1 credit

- Credit guidelines developed by the Michigan Department of Education
- .5 Health
- .5 Physical Education

Health and Physical Education Personal Curriculum (Modifications)

- ✓ Modification allowed if students take an additional credit beyond the required credits in English Language Arts, Mathematics, Science or World Languages
- ✓ Modification allowed for students with an IEP
- ✓ Modification allowed for transfer students who have completed two years of high school out-of-state or at a non-public school

Health and Physical Education Personal Curriculum (Modifications)

- ✓ Consideration: A previous law remains in effect requiring students who are physically fit and capable to take a physical education course.

(MCL 380.1502, Sec. 1502 (1) Health and physical education for pupils of both sexes shall be established and provided in all public schools of this state.

Subject to subsection (2), each pupil attending public school in this state who is physically fit and capable of doing so shall take the course in physical education.)

Visual, Performing, and Applied Arts

1 credit

- Credit guidelines developed by the Michigan Department of Education
- 1 credit in any **one** category of arts

Visual, Performing, and Applied Arts Personal Curriculum (Modifications)

- ✓ Modification allowed if student takes an additional credit beyond the required credits in English Language Arts, Mathematics, Science or World Languages
- ✓ Modification allowed for students with an IEP
- ✓ Modification allowed for transfer students who have completed two years of high school out-of-state or at a non-public school

World Languages

2 credits

Begins with Class of 2016

- Credits earned in grades 9 – 12
- OR
- An equivalent learning experience in grades K – 12
- Credit guidelines have been developed by the Michigan Department of Education

World Languages Personal Curriculum (Modifications)

- ✓ No modification for general education students (two exceptions)
- ✓ Modification allowed for students with an IEP
- ✓ Modification allowed for transfer students who have completed two years of high school out-of-state or at a non-public school

Online Learning Experience

- Online course OR
- Online Learning experience OR
- Experience is incorporated into one or more required credits
- Guidelines developed by the Michigan Department of Education

Online Learning Experience Personal Curriculum (Modifications)

- ✓ No modification for general education students (two exceptions)
- ✓ Modification allowed for students with an IEP
- ✓ Modification allowed for transfer students who have completed two years of high school out-of-state or at a non-public school

Online Learning

- Defined as “a structured learning activity that utilizes technology with intranet/internet-based tools and resources as the delivery method for instruction, research, assessment and communication.”

Career and Technical Education

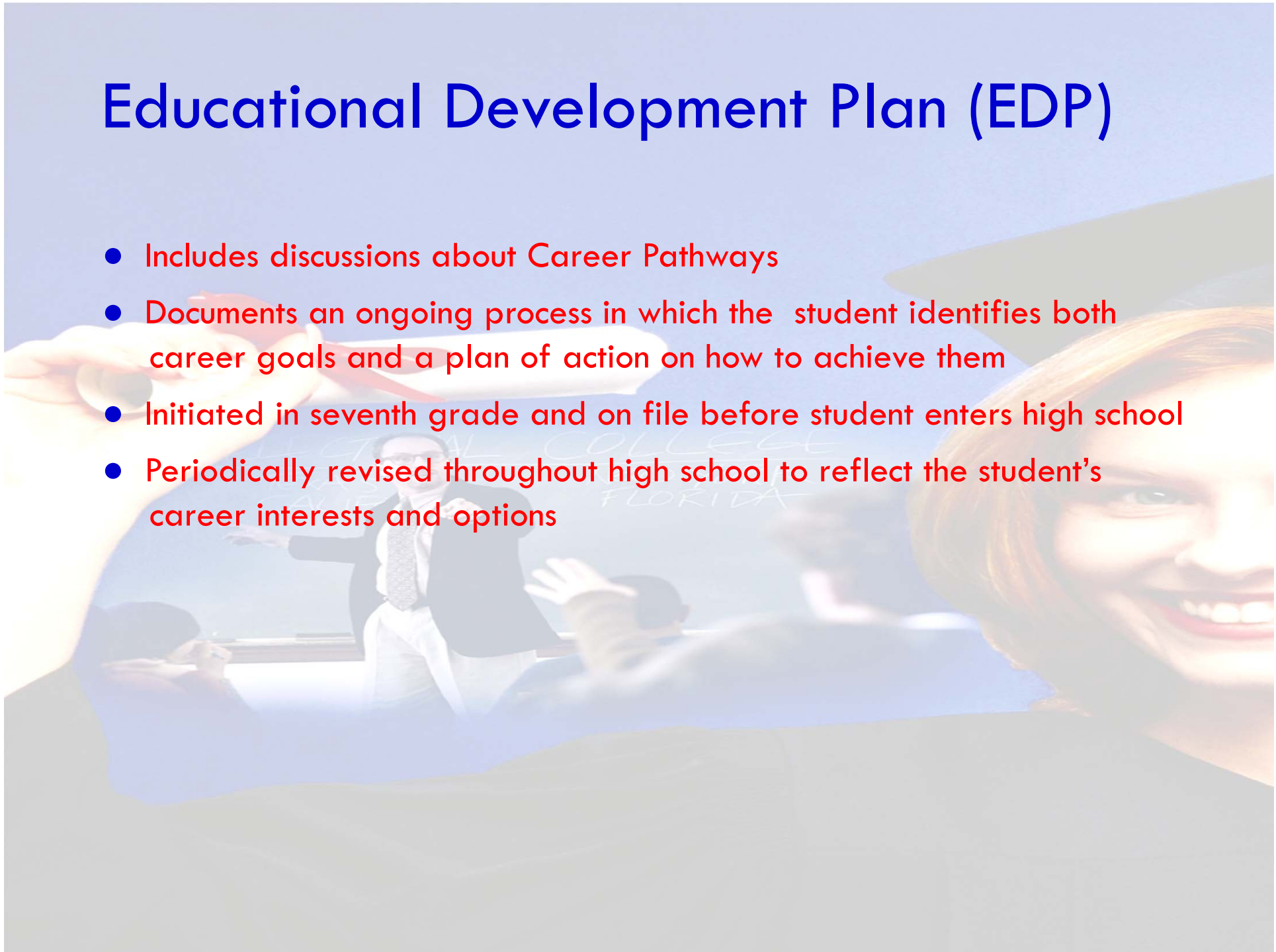
- Some CTE courses may be taught in a manner that will allow credit to be granted for both CTE and the specified content area.
- Eligible students may be able to participate in a co-op, internship or externship experience.

Career and Technical Education (continued)

- CTE courses are electives and are generally taken in a specific sequence.
- Graduation requirements taken in the 8th grade will allow more opportunity for CTE classes/electives during the high school experience.

Educational Development Plan (EDP)

- Includes discussions about Career Pathways
- Documents an ongoing process in which the student identifies both career goals and a plan of action on how to achieve them
- Initiated in seventh grade and on file before student enters high school
- Periodically revised throughout high school to reflect the student's career interests and options



Jackie Moase-Burke



World Languages
Requirement
Class of 2016

Personal Curriculum is a process to ...



“The PC is a process to modify specific credit requirements and/or content expectations based on the individual learning needs of a student. It is designed to serve students who want to accelerate or go beyond the MMC requirements and students who need to individualize learning requirements to meet the MMC requirements. .”

A Personal Curriculum modification is allowed for only four reasons

(PA 123 & 124, PA 623, PA 141):

- For any student, earning additional credit in specific subject areas and counting these credits toward meeting the state requirements.
- For students challenged with meeting Algebra II expectations, adjusting mathematics requirements.
- For students with an IEP, allowing modifications of the MMC necessary to demonstrate proficiency.
- For students transferring to a district from out of state or from a nonpublic school, modifications of requirements under limited conditions.

When to Request a PC

- A PC to modify the Algebra II credit requirement may be requested and created after the student completes 9th grade
- Parents of students with an IEP can begin to explore the PC option as early as the 7th or 8th grade when the EDP is developed.
- Parents may also request a PC at any point during the student's HS career.
- For enrichment: A PC can be requested after 9th grade. A student must, however, earn two social studies credits, including Civics, before substituting the third credit for more math, science, English language arts, or world languages credit

Application Process



- The process should be defined in writing to affirm that they are impartial and systematized.
 - What will the application look like?
 - Who will receive them?

APPLICATION



- General Education
- Student with an IEP
- Modified using PC Tree

- <http://www.misd.net/HSGraduation/default.htm>

Initial Review

- Whether modifications are allowable or can be met through electives or other means is determined.
- ▣ What, if any, additional documents will be reviewed?
- Review Educational Development Plan (EDP), student information, performance data, supports and interventions already implemented.

Personal Curriculum Additional Resources Pg. 1

Reasons for Denying Development of a PC

- ❑ The request is not allowed by statute.
- ❑ Other options for meeting the student's educational needs are available.
- ❑ It is not in the best interest of the student.
- ❑ The members of the PC development team cannot reach consensus.
- ❑ The district policy does not permit PCs.

MCL 380.1278(b)(5).

See also for example, Personal Curriculum Parent Educator Guide Pg. 4

MMC and Math

- The Michigan Merit Curriculum Requires:

“At Least 4 credits in Mathematics...including completion of at least algebra I, geometry, and algebra II, or an integrated sequence of this course content that consists of 3 credits and an additional mathematics credit, such as trigonometry, statistics, pre-calculus, calculus, applied math, accounting, business math, a retake of algebra II, a course in financial literacy as described in section 1165. A pupil may complete algebra II over 2 years with 2 credits awarded or over 1.5 years with 1.5 credits awarded...”

- MCL 380.1278a

Confusion Over the MMC and Requirements....



Math is the most confusing component of the MMC and creates the greatest hurdles for students...

Default Math Curriculum



- 4 Credits of Math:

- 1 Credit of Algebra I

- 1 Credit of Geometry

- 1 Credit of Algebra II

- 1 Credit of additional Math (which can include a math related course or math support class)

Note: All students must take a math course in their FINAL year

Algebra II and the Personal Curriculum



“If there is reason to believe a student may be unable to complete the Algebra II requirement of the [MMC], the requirement may be modified with a PC.”

- MDE: A Parent’s Guide to Personal Curriculum: Focus on Algebra II

Algebra II and the Personal Curriculum



“Modifications to the MMC, made through the PC, allow a student to reduce the 1.0 credit Algebra II requirement to a 0.5 credit of Algebra II, statistics, or functions and data analysis.”

- MDE: A Parent’s Guide to Personal Curriculum: Focus on Algebra II

Modifications of Algebra II Allowed Under A Personal Curriculum

Under a Personal Curriculum, a student must meet at a minimum:

- 3-1/2 Credits of math
- 1 Credit of Algebra
- 1 Credit of Geometry
- 1 math or math related course during the senior year

What is Possible for the Remaining .5 Credit

Allowable modifications of Algebra II

Under a PC, a student can do any of the following:

- .5 Credit of Algebra II
- .5 Credit of Statistics
- .5 Credit of Functions and Data Analysis

Additionally, the student may take a semester's content of Algebra II over one year, for one math credit.

Alternative Algebra 2 Route

The following options do not require a PC

- A student may complete algebra II over 2 years with 2 credits awarded or over 1.5 years with 1.5 credits awarded
- For example:
 - 9th Grade – Algebra 1 (1 cr.)
 - 10th Grade – Geometry (1 cr.)
 - 11th Grade – Algebra 2 (.5 Algebra 2 cr, but 1 math cr.)
 - 12th Grade – Algebra 2 (.5 Algebra 2 cr, but 1 math cr.)
 - Total = 4 math credits

Personal Curriculum For Students With Disabilities



“A PC can be used to modify **any content** within the MMC for a student with an IEP if he or she needs it in order to access and achieve in the MMC.”

- MDE: Parents Guide to Personal Curriculum: Focus on Students With an IEP (emphasis added).

When Should Parents of a Student With A Disability Consider an IEP?

“Parents of students with an IEP can begin to explore the PC option as early as the 7th or 8th grade when the EDP is being developed. If granted, the PC goes into effect when the student enters high school. Parents of students with an IEP may also request a PC at any point during the student’s high school career.”

- MDE: A Parents Guide to Curriculum: Focus on Students With An IEP

Subsection (k)

(k) If the parent or legal guardian of a pupil requests ... a modification of the Michigan merit standard requirements **that would not otherwise be allowed** under this section and demonstrates that the modification is necessary because the pupil is a child with a disability, the school district or public school academy **may allow that additional modification** to the **extent necessary because of the pupil's disability** if ... (a) determines that the modification is **consistent with both the pupil's educational development plan ... and the pupil's individualized education program.**

MCL 380.1278(b)(5)(k) (emphasis added).

Can a Student With an IEP Develop a Personal Curriculum That Exempts Them From Algebra II Altogether?

- ❑ A student with an IEP may have a PC that modifies Algebra II beyond the standard 0.5 credit modification allowable with a PC for general education students. The student's PC may reduce the number of Algebra II content expectations on which the student must demonstrate proficiency.

It is the responsibility of the PC committee to determine what is practicable for the student, while maintaining the rigor of Algebra II and the MMC.

- ❑ MDE: Personal Curriculum: Frequently Asked Questions (Q31, P17)

What is Meant By “Modification Not Otherwise Allowed”

- It means that exceptions to the limitations on the personal curriculum stated in the law (e.g., no modifications of ELA, Science, online, etc.) may be allowable for a student with an IEP...

Ultimately, decisions regarding performance standards for earning MMC credit (i.e., the definition of proficiency in meeting the content expectations that define required MMC credits) and determination of the credit associated with each course, **are local district/board decisions.**

- MDE: Personal Curriculum: Frequently Asked Questions (Q28, P17) (emphasis added).

Some Scenarios



- Districts should have as many options as possible including credit recovery options, summer school, and online learning experiences available to all students.
- It's all about options – the more options for support and credit recovery the better (Large districts v. Small Districts)

Have you developed a PC for any student in your district?




1. YES
2. NO

Have you developed a PC for a student with an IEP in your district?



1. YES
2. NO

How comfortable are you with
developing PCs?



1. YES
2. NO



Rita Book

Rita is a tenth-grade student who receives special education services, due to her certification as a student with a disability in math. Rita has taken Algebra I with modifications and support per her IEP, but she has failed to pass five of her ten chapter tests and failed the class in ninth grade. She has completed her Educational Development Plan with her counselor and wants to become a Child Care Provider after she graduates from high school and may want to continue with an Associates Degree from Macomb Community College.

PC for Rita Book with IEP- General Education with RR Support
 Does not Invoke or Require Subsection (k).

	9 th Grade	10 th Grade	11 th Grade	12 th Grade
First Period	Algebra I	Algebra I	Geometry	Algebra 2 – 1 sem. over 1 year
Second Period	English	English	English	English
Third Period	US History	World History	Accounting/ Bookkeeping	Earth Science
Fourth Period	Biology	Chemistry	SE RR Support	SE RR Support
Fifth Period	PE and Health	ART	Economics .5cr Civics .5cr	CTE Early Childhood
Sixth Period	SE RR Support	SE RR Support – Primarily for Algebra I	CTE Early Childhood	CTE Early Childhood

PC for Rita Book with IEP – Utilizing a

Departmentalized RR Model –

HQ SE Teachers Required for this Scenario/ Does not invoke Subsection (k)

	9 th Grade	10 th Grade	11 th Grade	12 th Grade
First Period	Algebra I	Algebra I (DRR)	Geometry (DRR)	Algebra 2 – 1 sem. over 1 year
Second Period	English	English	English	English
Third Period	US History	World History	Accounting/ Bookkeeping	Earth Science
Fourth Period	Biology	Chemistry	SE Study Skills	SE Study Skills
Fifth Period	PE and Health	ART	Economics .5cr Civics .5cr	CTE Early Childhood
Sixth Period	SE Study Skills	SE Study Skills	CTE Early Childhood	CTE Early Childhood

Subsection (k) would be needed if HSCEs were significantly reduced and modified.

New Scenario – Sam Sample



Sam has a history of struggling with math and science courses in middle school. The parents requested a PC at the end of 8th grade anticipating Sam's challenges in 9th grade with the Michigan Merit Curriculum. Sam has a specific learning disability that impacts his academic performance in most courses. His EDP and vision for his future is to work for his parents' construction business. He will attend the community college and seek further training in Construction Technology.

PC for Student with IEP which invokes Subsection (k) for Science and Mathematics

	9 th Grade	10 th Grade	11 th Grade	12 th Grade
First Period	Algebra I (.5cr) and .5 math related cr.	Algebra I (.5cr) and .5 math related cr.	Geometry (.5 cr) and .5 math related cr.	Geometry (.5 cr) and .5 math related cr.
Second Period	English	English	English	English
Third Period	US History	World History	Accounting/ Bookkeeping	Earth Science
Fourth Period	Biology (Reduced number of HSCE)	Chemistry (Reduced number of HSCE)	Economics .5cr Civics .5cr	SE Study Skills and Support
Fifth Period	PE and Health	ART	SE Study Skills and Support	Elective
Sixth Period	SE Study Skills and Support	SE Study Skills and Support	Elective	Elective

Does your group support granting this
PC request?



1. YES
2. NO

PC for Student with IEP which invokes Subsection (k) for Science and Math

	9 th Grade	10 th Grade	11 th Grade	12 th Grade
First Period	Algebra I (.5cr)	Algebra I (.5cr)	Geometry (.5cr)	Geometry (.5cr)
Second Period	English	English	English	English
Third Period	US History	World History	Accounting/ Bookkeeping	Earth Science
Fourth Period	Biology (Reduced number of HSCE)	PC exempted Student from Chemistry/Physics - Elective	Economics .5cr	SE Study Skills and Support
			Civics .5cr	
Fifth Period	PE and Health	ART	SE Study Skills and Support	Elective
Sixth Period	SE Study Skills and Support	SE Study Skills and Support	Elective	Elective

Does your group support granting this
PC request?



1. YES
2. NO

PC for Student with IEP which invokes Subsection (k) for Science and Math and VPAA credit

	9 th Grade	10 th Grade	11 th Grade	12 th Grade
First Period	Algebra I (.5cr)	Algebra I (.5cr)	Geometry (.5cr)	Geometry (.5cr)
Second Period	English	English	English	English
Third Period	US History	World History	SE Study Skills and Support	Earth Science
Fourth Period	Biology (Reduced number of HSCE)	PC exempted Student from Chemistry - Elective	Economics .5cr	SE Study Skills and Support
			Civics .5cr	
Fifth Period	PE and Health	Accounting/ Bookkeeping	CTE Construction Building Trades	CTE Construction Building Trades
Sixth Period	SE Study Skills and Support	SE Study Skills and Support	CTE Construction Building Trades	CTE Construction Building Trades

Does your group support granting this
PC request?



1. YES
2. NO

Question



1. YES
2. NO

Question



1. YES
2. NO

Question



1. YES
2. NO

CTE Pathway for MMC Math

“A pupil also may partially or fully fulfill the algebra II requirement by completing a department-approved formal career and technical education program or curriculum that has **appropriate embedded mathematics content**, such as a program or curriculum in electronics, machining, construction, welding, engineering, or renewable energy.”

- MCL 380.1278a (CTE Section) (emphasis added).

Its ALL in the Interpretation....



□ The Statute is clear.....

ANY CTE Course that has “appropriate embedded mathematics content” can be substituted for Algebra II.

However, MDE appears to allow only Algebra II content regardless of whether it is appropriate for the CTE course of study (ex. Machinery)

Note: This Conflict is unresolved...

Alternate Course of Study Leading to a Certificate of Completion



- Leading to a Certificate versus a Diploma
- Not all students will be able to earn a MMC HS diploma even with a PC.

When might an alternate course of study be considered?



The student:

- is significantly below grade level,
- continues to demonstrate a significant slow learning rate,
- is unable to master grade level content and generalize learning across performance contexts, despite implementation, with fidelity, of research-based special education and general education intervention.

When might an alternate course of study be considered?



- The student's educational assessment history consistently demonstrates problems with academic, behavior, or social performance when compared with same-age peers.
- The student's emotional, behavioral, cognitive, or neurological impairment requires modifications that significantly alter grade level content expectations and other graduation criteria.

When might an alternate course of study be considered?



- A student demonstrates more consistent progress in functional skill sets such as basic math and reading or routine work related tasks.
- The student will benefit from continuing his/her education beyond the traditional 4 years of high school for the purpose of gaining:
 - employability skills,
 - social skills, and
 - real work experience through post-secondary school options

When might an alternate course of study be considered?



- The student has school performance difficulties impacting participation and productivity in the traditional school environment.
- The student has a high interest in a specific career pathway that could lead to pursuance of that career through a trade or vocational school, a community college, or the armed forces.

When might an alternate course of study be considered?



- There is reasonable alignment with post-secondary plans, including EDP and IEP transition goals and objectives.
- The student and his or her family/support system have been engaged in the decision making process and understand the purpose as a potentially more relevant alternate course of study that is aligned with the student's post-secondary vision.

Guiding Questions

1. What is the student's disability and present level of academic and behavioral functioning?
2. Is the student able to master GLCE/HSCE with accommodations/modifications that preserve the integrity of the Content Expectations?
3. Is the student participating in MI ACCESS assessment in any of the content areas?
4. When/how was the determination made to have the student participate in the MI ACCESS assessment?

Guiding Questions



5. Has a comprehensive EDP been completed and thoroughly reviewed?

6. If the student is able to identify a career pathway, what education and training will be required? How does this align with the student's present academic, social, and emotional abilities?

Guiding Questions



7. Has a comprehensive re-evaluation been completed, including an Adaptive Behavior Inventory?
8. Have the student and parents/guardians been actively engaged in the process with the knowledge that an alternate course of study is an option?

Macomb PC Planner



- Macomb PC Planner is a software management tool that conducts an interview of the user and generates a list of requirements for the student's PC based on answers to the interview questions.
- www.misd.net/MT/Personalcurriculum.htm



Macomb Intermediate School District

44001 Garfield

Clinton Township, MI 48038

Thank You!