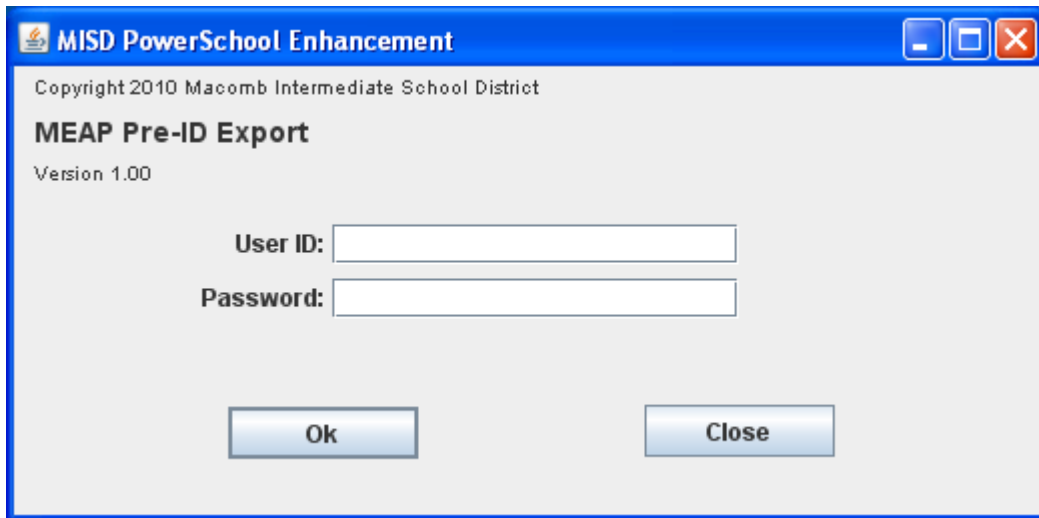


The PowerSchool enhancement program for producing the MEAP, MI Access, and ELPA pre-id files is ready for our Pioneers to test.

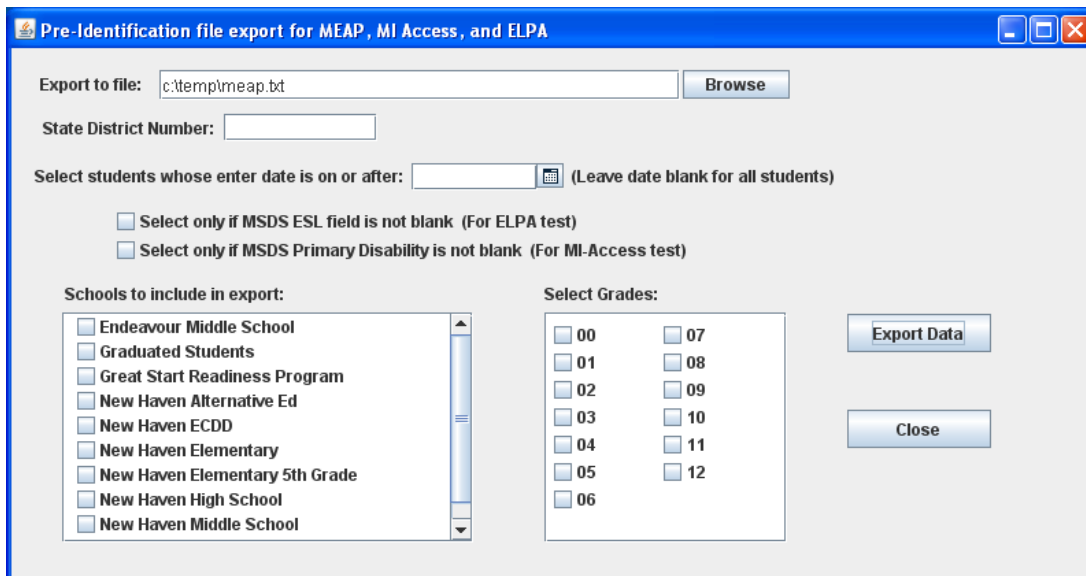
The program can be launched from the following URL:

<http://ps-app.misd.net:8080/miPreId/miPreId.jnlp>

The program will ask for an ID and password. Use the same ID and password used for the CTEIS export and Transcripts.



After logging in you will see the main screen:



The user will select a folder and name for the export file. The state district number must be entered. The user will also select the schools to include in the export and the grades to be included.

There is an option to select only students whose enter date is on or after a particular date. This option would be used if a school was having pre-id done from the MSDS files but wanted to export those students who enrolled after the February MSDS general collection. Leave this date blank to include all students in the schools and grades selected.

There are also mutually exclusive check boxes for the ELPA and MI-Access test exports. Those boxes would only be checked when exporting for one of those tests. Both boxes should be left blank when exporting for MEAP pre-id.

When all of the options have been selected, click the Export Data button. The process should only take a couple of minutes. When complete you will see a message like the one below that shows the export file path and name as well as the number of records exported.

