

Verify Import Files Report



Management Technology Helpdesk

May 2015

Contents

Verify Import Files Report	3
Bilingual System import file	3
TIEnet Systems import file	3
Report program input parameters	4
Sample Report.....	5
Error Messages.....	6
Version Information	7

Verify Import Files Report

The PowerSchool Verify Import program reads tab delimited files imported into PowerSchool for Bilingual Systems and Special Education (TIEnet). A report is created identifying invalid student numbers and UIC numbers not found in PowerSchool. The TIEnet file import reads all the student records in PowerSchool, indicating invalid data that will restrict the import back into TIEnet and submission for the MSDS data collection.

The output report identifies the source of the record: LEP (Bilingual), TIEnet, or PowerSchool (PS). Errors and warnings are produced for a student, identified by the student number, UIC code, and student name.

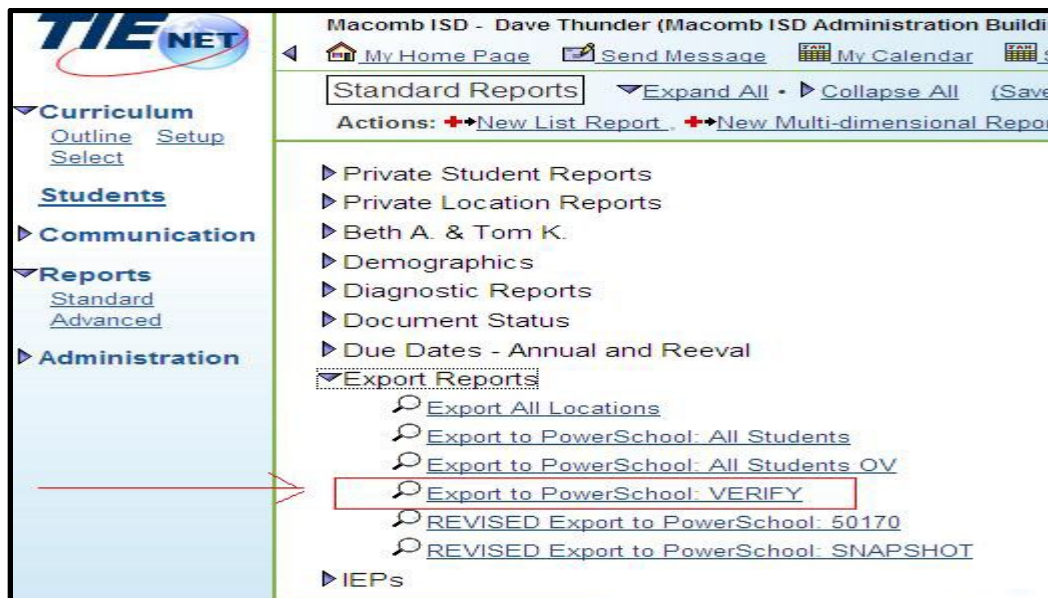
Bilingual System import file

Run the MSDS extract file from Bilingual system.

TIEnet Systems import file

Run the daily extract file for your school district, downloading the file in tab delimited format.

Reports > Standard Reports > Export Reports > Export to PowerSchool VERIFY: your district number

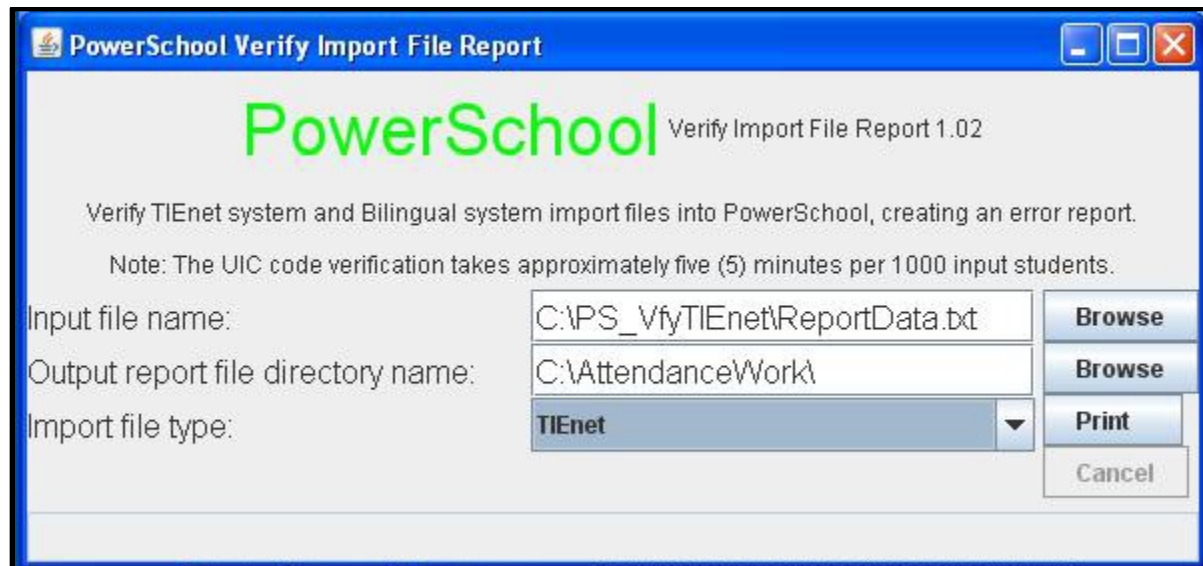


Report program input parameters

- Click on the Browse button to specify the name of the tab delimited export file saved from the Bilingual system or TIEnet.
- Click on the Browse button to specify the directory name where the error report is produced.
 - Note the directory must have the special PowerSchool connection file for your system.
 - It is suggested you have a common report folder for running PowerSchool reports.
- Identify the file source as TIEnet or Bilingual systems (LEP).

The output report file is named PSVfyTIEnet.PDF or PSVfyLEP.PDF, depending on the report option chosen. The PDF report file is stored in the output file directory name.

Press the Print button to produce the report. The program will display a progress bar displaying the program status. The report program takes several minutes to verify the UIC codes and to analyze all the PowerSchool student records for missing data or invalid data.



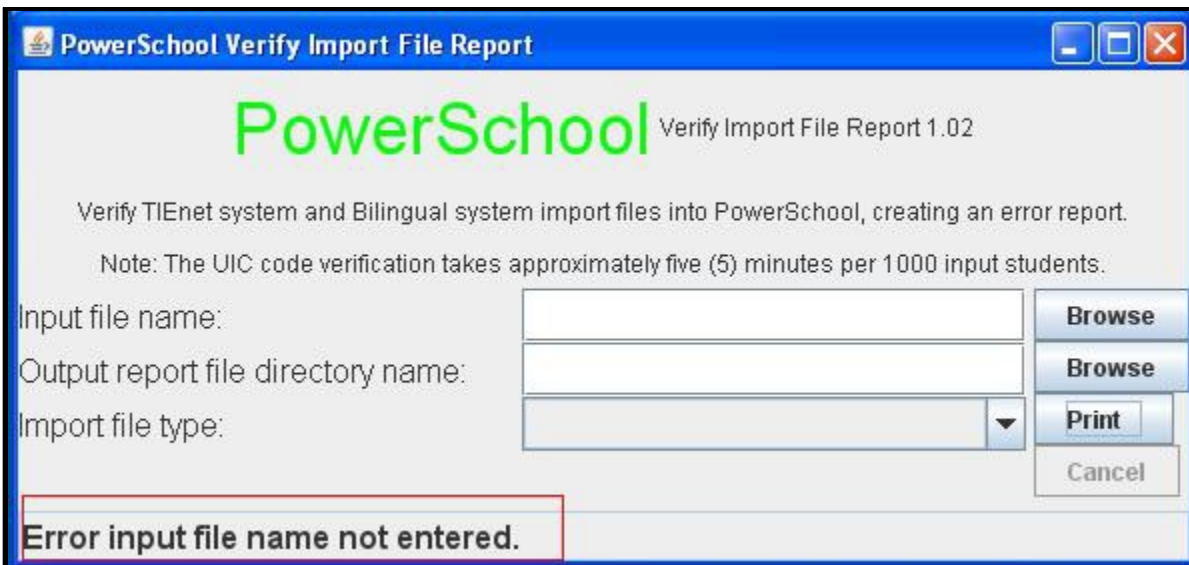
Sample Report

The PowerSchool errors and warnings are sorted by building number. This will allow each building administrator to identify and correct the data in their building.

Source	Type	Bldg	Student Number	UIC#	Message
TIESET	Error	10	41942		Invalid student number
TIESET	Error	10	1	32	Student Number is not related to the UIC in PowerSchool
TIESET	Warn	101	1	32	FTE value less than one=0.50
TIESET	Warn	522	4	42	FTE value less than one=0.50
TIESET	Warn	244	5	9	Missing primary disability code
TIESET	Warn	5	244	50	Missing primary educational setting
TIESET	Warn		244	501	Missing IEP date
TIESET	Warn	10*	244	501	Missing a Program code or Service code
TIESET	Warn	2	821	55	FTE value less than one=0.55
TIESET	Error	1	12	182	Invalid student number
TIESET	Error	1	12	182	Student Number is not related to the UIC in PowerSchool
TIESET	Warn	176	12012	182	FTE value less than one=0.50
TIESET	Error	120	36859	798	Invalid student number
TIESET	Error	12*	36859	798	Student Number is not related to the UIC in PowerSchool
TIESET	Warn	1	36859	798	FTE value less than one=0.54
TIESET	Warn	1	3	31	FTE value less than one=0.50
TIESET	Warn	11	3	31	Missing primary disability code
TIESET	Warn	1	4	3	Missing primary educational setting
TIESET	Warn	54	3	16	Missing IEP date
TIESET	Warn	1	4	3	Missing a Program code or Service code
TIESET	Warn	20	2	85	FTE value less than one=0.52
TIESET	Error		55	91	Missing student number
TIESET	Error		55	91	Student Number related to the UIC is=0000045470
TIESET	Warn	10	5	37	Missing primary disability code
TIESET	Warn	10	5	37	Missing IEP date
TIESET	Warn	11	0	51	FTE value less than one=0.57
TIESET	Warn	20	3	0	Missing Exit Date / Exit Reason combination
TIESET	Warn	40	2	4	Missing Exit Date / Exit Reason combination
TIESET	Error	11	3	41	Invalid student number
TIESET	Error	11	3	41	Student Number is not related to the UIC in PowerSchool
TIESET	Warn	11		45	FTE value less than one=0.75
TIESET	Error		0026	3	Invalid student number
TIESET	Error		0026	3	Student Number is not related to the UIC in PowerSchool
TIESET	Warn	149		148525	FTE value less than one=0.55
TIESET	Warn	2057		16806	FTE value less than one=0.54
TIESET	Error	20		74	Student Number is not related to the UIC in PowerSchool
TIESET	Warn	20		74	FTE value less than one=0.77
TIESET	Warn	20		29	FTE value less than one=0.59
TIESET	Warn	2		65	Missing Exit Date / Exit Reason combination
TIESET	Warn	2		65	Missing Exit Date / Exit Reason combination
TIESET	Warn	11		72	Missing primary educational setting
TIESET	Warn	11		72	Missing a Program code or Service code

Error Messages

Error messages are displayed on the bottom of the screen.



Error input file not entered.

Specify the tab delimited export file created from the Bilingual system or TIEnet.

Error input file not found.

The specified input file name was not found in the file directory. The input file name will normally have a file extension of ".TXT".

Error Oracle database connection file not found.

The special Oracle connection file was not found in the output report file directory. Contact your PowerSchool system administrator for directions on how to run PowerSchool reports and which report directory you should use.

Error the output report directory name is not specified.

The output report directory must be specified to create the report output files. The reports are created in PDF format.

Error the input file type must be specified.

Enter the export file name, in tabbed delimited format, from the Bilingual system or TIEnet system.

Version Information

Version Change History 1.02 November 2010

The program was modified to run using an input form, with the prior capability to run the report in batch mode. The student name was put into the report for reference in PowerSchool.