

## K-5 Math Coaching Network Meetings

**Time: 8:30 am - 3:00pm**  
**Fee \$150.00 (includes materials)**  
**SCECHs Pending**

September 19, 2024 with Julie Steele  
November 21, 2024  
February 25, 2025  
April 23, 2025

To Register Online: [events.misd.net](https://events.misd.net)

- Login or Create New Account
- Click on "Browse Courses"
- Search for the Course (either by name or date)
- Click on the Course Name
- Click on "Add to Cart"
- Click on "Checkout" or review your cart
- Click on "Proceed to Payment" and choose method of payment
- Click on "Place Order Now"
- After completing payment information, click on "Print Receipt"
- You will receive an email confirmation
- Send payment via VANMAIL or US Mail to:

Macomb ISD  
44001 Garfield Road  
Clinton Township, MI 48038

### **REGISTRATION IS A COMMITMENT OF PAYMENT and ATTENDANCE**

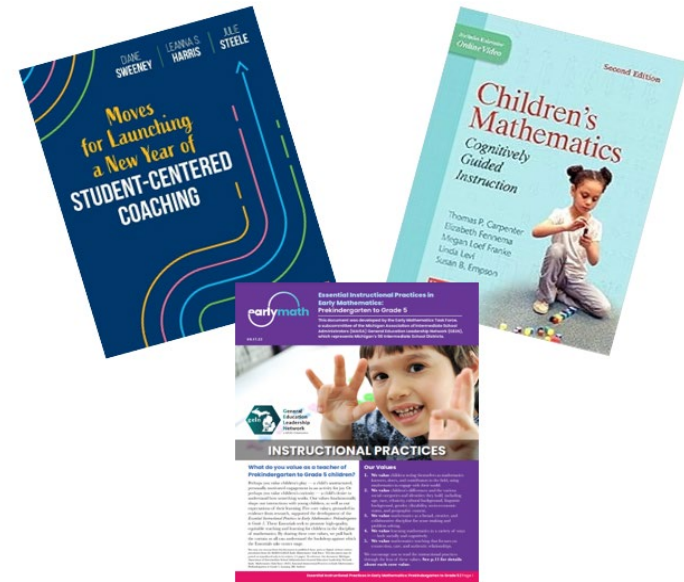
All cancellations must be received in writing at least seven days prior to the beginning of the workshop to [aoleskie@misd.net](mailto:aoleskie@misd.net)

**SCECHs approved (additional costs applies)**

For questions about registration, please contact Angie Oleskie at [aoleskie@misd.net](mailto:aoleskie@misd.net) or (586)228-3457

# K-5

## MATH COACHING NETWORK



### **Location:**

Macomb ISD or School Buildings in the county

### **Cost:**

\$150.00 (includes materials & lunch)



Macomb Intermediate School District  
Department of Consultant Services  
44001 Garfield Road, Clinton Township, MI 48038-1100  
586/228-3300. [www.misd.net](http://www.misd.net)



### **Target Audience:**

K-5 district or building-based math coaches who support elementary teachers.

Our professional learning centers on Diane Sweeney's Student Centered Coaching Model to document our impact on student learning. The model is an evidence-based instructional coaching model that shifts the focus from 'fixing' teachers to collaborating with them to design instruction that targets student outcomes. While our focus is on Diane Sweeney's work, we also draw on other experts from the field.

**Nick Kostrzeba**  
Math Consultant  
(586)228-3515  
[nkostrzeba@misd.net](mailto:nkostrzeba@misd.net)

**Lea McAllister**  
Math Consultant  
(586) 228-3479  
[lmcallister@misd.net](mailto:lmcallister@misd.net)

**Katie Wilamowski**  
Math Consultant  
(586)228-3541  
[kwilamowski@misd.net](mailto:kwilamowski@misd.net)

## **Math Coaching Network**

The math coaching network is available at the Macomb ISD for **Macomb County math coaches and math coordinators** who focus on providing professional learning and additional support for staff to implement various programs and practices in Tier I instruction.

The purpose of the coaching network is to provide the designated staff with ongoing professional learning; to deepen knowledge surrounding effective evidence-based coaching practices; and to engage in a collaborative environment while developing coaching skills centered around the [Essential Instructional Practices in Early Mathematics](#) and the [Michigan Math Standards](#).

### **In collaboration coaches will:**

1. Engage in of professional learning with the overarching goal of student achievement and quality classroom instruction including:
  - a. Essential Coaching Foundations: Practice as coaches (observing, co-planning, modeling, providing feedback, having crucial conversations, etc.)
  - b. Assessment: Analysis and use of data to differentiate and inform instruction
  - c. Instruction: Selection of instructional practices and interventions that accelerate math development
  - d. Use of adult learning theory to build teacher and school capacity for growth
  - e. Study groups: (book study and action research)
  - f. Engage in a coaching lab experience
  
2. Network with other coaches in the county to share effective practices and collaborate around challenges unique to a secondary setting.

These intentional efforts will ensure a consistent, ongoing structure of support for high-quality math instruction, resulting in improved math skills for ALL children.